

# MONTHLY MEMBERSHIP PROGRESS REPORT

District 133

Results as of: 5/31/2026

GMT:

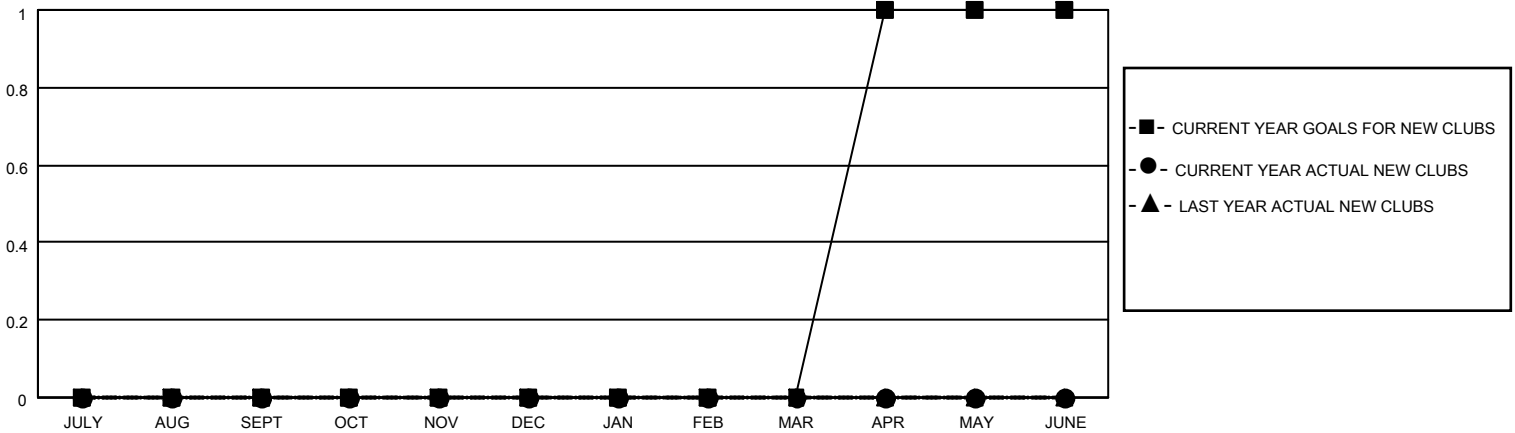
LOCATION REPUBLIC OF IRELAND

GMT CA

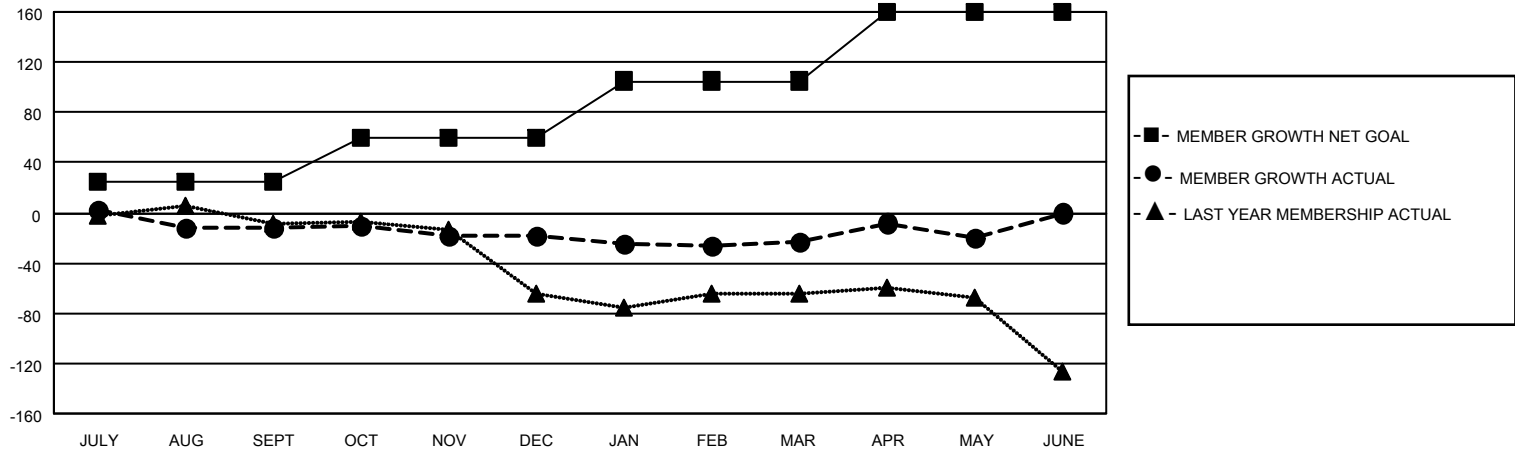
Clubs			
RESULTS FOR 2025-2026			
QUARTER	NEW CLUB GOAL	NEW CLUBS	DROPPED CLUBS
JULY/AUG/SEPT	0	0	0
OCT/NOV/DEC	0	0	0
JAN/FEB/MAR	0	0	0
APR/MAY/JUNE	1	0	0

Members			
RESULTS FOR 2025-2026			
QUARTER	MEMBER GROWTH NET GOAL	MEMBER GROWTH ACTUAL	DROPPED MEMBERS ACTUAL (including transfers)
JULY/AUG/SEPT	25	35	43
OCT/NOV/DEC	35	22	28
JAN/FEB/MAR	45	35	28
APR/MAY/JUNE	55	27	23

GOALS AND ACTUAL NEW CLUBS CUMULATIVE



GOALS AND ACTUAL MEMBERS CUMULATIVE



DROPPED CLUBS: 0	35 CLUBS OF 81 ADDED 1 OR MORE NEW MEMBERS	<b>GENDER DISTRIBUTION</b> MALE 1,298 (73.13%) FEMALE 478 (26.93%)
<b>DROPPED MEMBERS</b> DECEASED 15 CLUB CANCELLED 0 OTHER 107 TOTAL 122	<a href="#">CLICK HERE FOR CUMULATIVE MEMBERSHIP DATA</a>	TOTAL FAMILY UNIT MEMBERS 50 FAMILY MEMBERS PAYING HALF DUES 25